

Corprimo

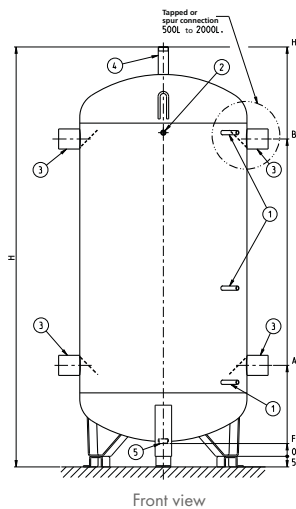
Primary storage tank
11 models available



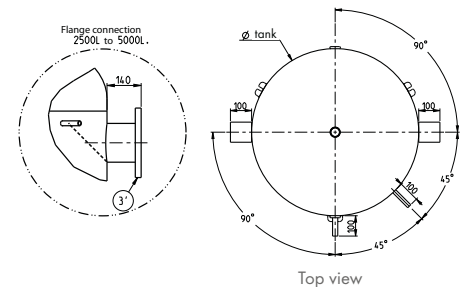
CHARACTERISTICS

- Steel water tank (no cathodic protection, no enamel)
- 10 bar operating pressure
- Insulation and external jacket: flexible SNC (100 mm high density PU foam and PVC jacket)
- Insulated bottom (below tank)
- 1/2" connection tap for thermometer
- Thermometer
- 4 connection taps with dip tubes
- 1" 1/4 drain at the bottom of the tank
- 3 blind thermowells (20 mm penetration length inside tank) for temperature sensors
- 3 feet (included)
- 50 mm high risers (not for 500 L model)
- 2 hoist rings
- Warranty:
5 years for tanks
2 years for parts

500 L - 3000 L



Front view



Top view



TANK CHARACTERISTICS

	Corprimo models										
	500	750	1000	1000 TB*	1500	1500 TB*	2000	2500	2500 TB*	3000	3000 TB*
REFERENCES	610322	610323	610324	610325	510385	610327	610328	610329	610330	610331	610332

TECHNICAL CHARACTERISTICS AND PERFORMANCE

Usable capacity (L)	517	768	1022	1020	1425	1552	2077	2512	2521	3025	2904	
Dimension passageway (mm)	680	795	795	1015	1015	1265	1265	1265	1515	1265	1515	
Minimum installation height (mm)	2100	2135	2660	1890	2415	1895	2330	2690	2106	3115	2326	
Tilting dimension (mm) ⁽¹⁾	1980	1960	2480	1730	2270	1720	2180	2530	1970	2950	2180	
Empty tank weight (kg)	72	110	153	141	180	180	223	292	326	331	350	
Thermal losses (W/K) ⁽²⁾	Flexible M1 insulation	1.380	1.759	2.157	2.213	2.593	2.898	3.296	3.722	4.028	4.231	4.352
	Steel TMO insulation	1.218	1.553	1.905	1.954	2.289	2.559	2.910	3.286	3.556	3.736	3.842

DIMENSIONAL CHARACTERISTICS (IN MM)

	ø DN	ø tank	650	790	790	1000	1000	1250	1250	1250	1500	1250	1500
Overall height without risers	HT		1950	1935	2460	1690	2215	1695	2130	2490	1906	2915	2126
Height with risers	H		-	1985	2510	1740	2265	1745	2180	2540	1956	2965	2176
Lower connexion	A		440	430	430	475	500	540	540	570	637	570	637
Upper connexion	B		1510	1500	1890	1155	1460	1095	1530	1860	1207	2285	1427
Height under drain	F		110										60
Sensor tube	1												ø interior 15
Thermometer tube	2												F 15/21
Connexion	3		F 66/76				F 80/90						-
Flange connection PN10/PN16	3'												Flange DN 150
Purge	4			M 40/49						M 50/60			
Draining	5												F 33/42

(1) Risers not mounted. (2) Storage at 65 °C - Room temperature 20 °C. Values determined according to European Standards in force.

*TB: compact model